

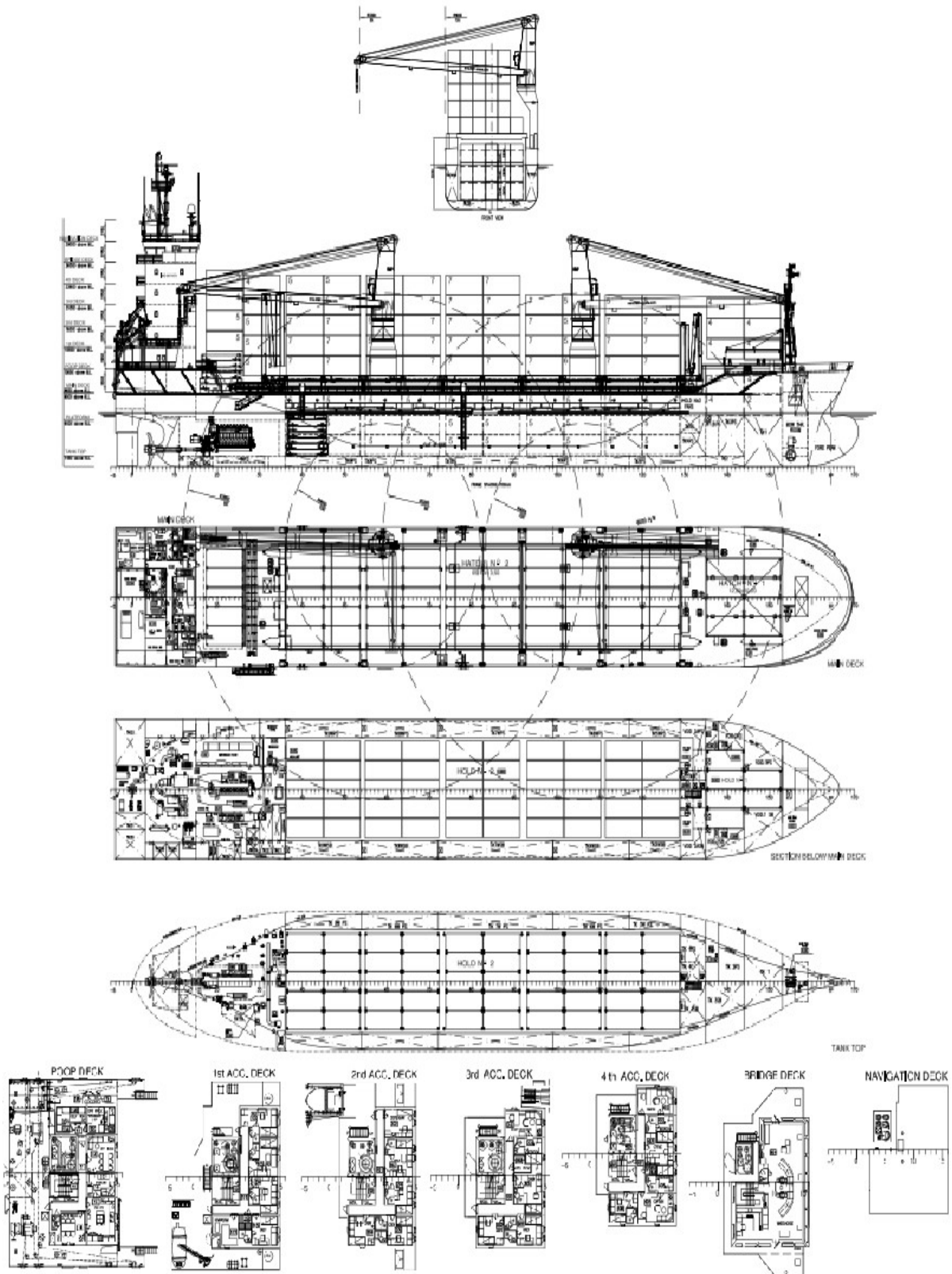
ASC

LINER SERVICES

VESSEL DESCRIPTION: M/V ASC LOTTI

CLASS	DNV		
TYPE	GEARED MULTIPURPOSE BOX TWEENDECKER		
BUILT	2008		
PORT OF REGISTRY	ST. JOHN, ANTIGUA & BARBUDA		
FLAG	ANTIGUA & BARBUDA		
IMO NUMBER	9436953		
DEADWEIGHT	7,700 MT DWAT		
REGISTER TONNAGE	6,155 GRT / 2,759		
LENGTH	122.45 M		
BEAM	18.20 M		
DRAFT	7.15 M		
DEPTH	9.50 M		
SPEED CONSUMPTION	ABOUT 12.5 KN ON ABOUT 13.5 MT VLSFO		
PORT CONSUMPTION	ABOUT 1.6 MT LSMGO WHEN IDLE, ABOUT 2.6 MT LSMGO WHEN BOTH CRANES WORKING		
CAPACITIES	9,856 CBM		
HATCH 1 / HATCH 2	12.60M X 10.20M / 65.10 M X 13.50 M		
HOLD 1 / HOLD 2	65.10 M X 13.50 M X 6.55M / 12.60 M X 10.20M X 9.55M (NARROWING FORE TO 5.10 BREADTH)		
HATCH COVERS	HYDRAULIC FOLDING TYPE		
CARGO GEAR	2 CRANES PORT SIDE MOUNTED NMF HIGHSPEED AT 120 MT SWL COMBI 240 MT SWL		
GRAINFITTED	YES, 2 BULKHEADS		
TWEENDECK	3 HEIGHTS		
	P1	P2	P3
	4700	6000	MM TANK TOP - TWD COVER
CONTAINER CAPACITY	20 FT	40FT	
TOTAL	532		
MAXIMUM STACK LOAD - HOLD	61.5 MT (20')	61.5 MT (40')	
MAXIMUM STACK LOAD - DECK	40 MT (20')	60 MT (40')	
REEFER PLUGS	32 REEFER PLUGS - FEMALE ON DECK		
DECK STRENGTHS	TANK TOP 1 & 2	TWD	HATCH COVER 1 & 2
	10 & 18MT/SQM	2.5 MT/SQM	2.3 & 2.8 MT/SQM
OTHERS	CO2 FITTED, AUSTRALIAN WATER FITTED, BOW THRUSTER		

VESSEL DRAWINGS: M/V ASC LOTTI



Speed and consumption figures are calculated basis maximum Beaufort 2, no swell and no adverse currents. Intake is always subject to vessel's stability, trim, permissible weights and is subject to regulations of visibility. Lifting capacity of vessel's cranes is subject to vessel's stability and can depend on cargo/ballast on board. Container data as well as grain/balc capacity assumes tweendeck ashore. All details are about and believed to be correct but given without guarantee.