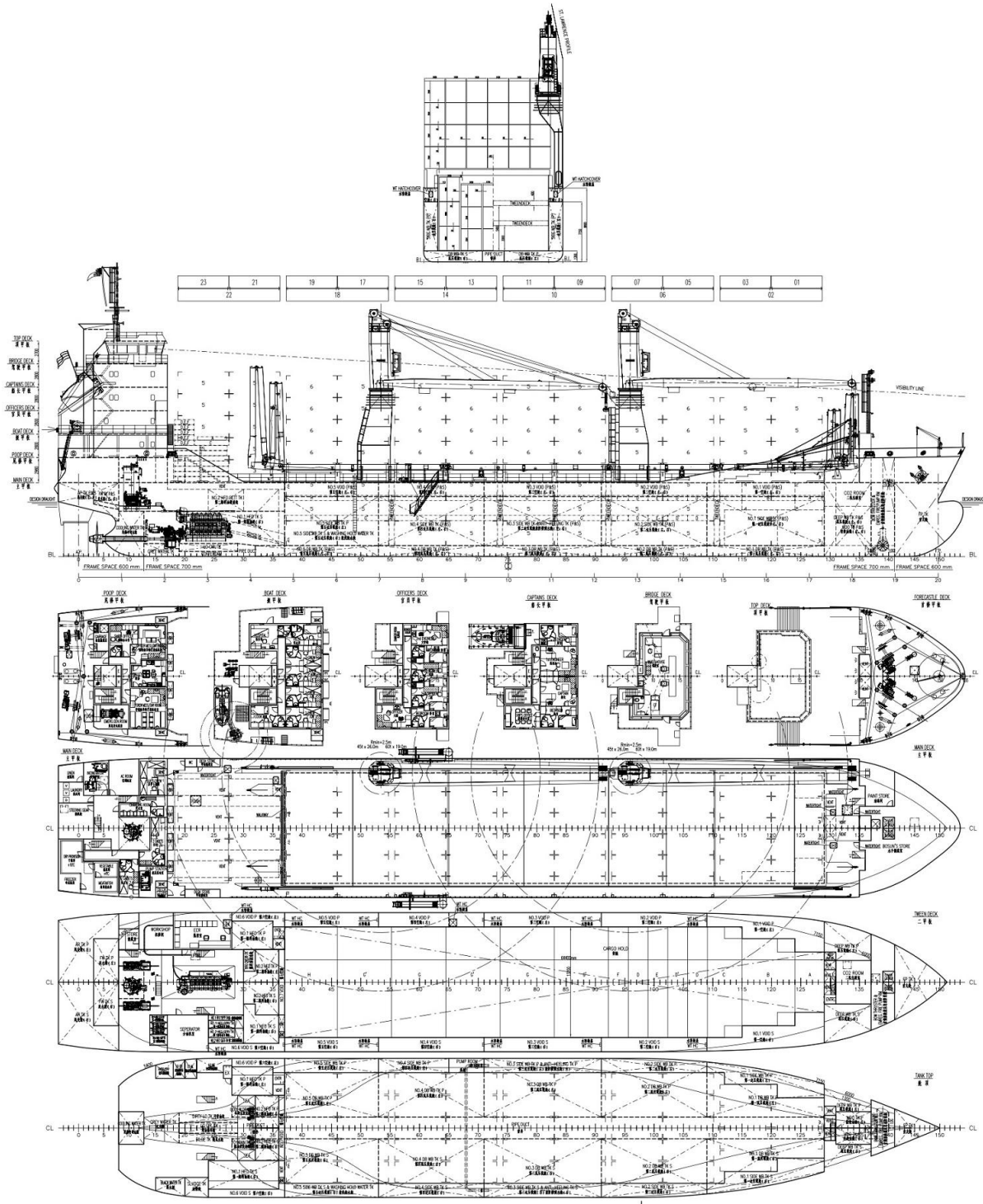


ASC LINER SERVICES

VESSEL DESCRIPTION: M/V BORKUM

CLASS	GL.(+) 100 A5 E3 IW STRENGTHENED FOR HEAVY CARGO EQUIPPED FOR CARRIAGE OF CONTAINERS SOLASII-2, REG. 19 IW PWM +MC E3 AUT		
TYPE	GEARED MULTIPURPOSE BOX TWEENDECKER		
BUILT	2012		
PORT OF REGISTRY			
FLAG	ANTIGUA & BARBUDA		
IMO NUMBER	9457153		
DEADWEIGHT	5,460 MT DWAT		
REGISTER TONNAGE	4,591 GRT/1,966 NRT		
LENGTH	108.2 M		
BEAM	16.60 M		
DRAFT			
DEPTH	8.80 M		
SPEED CONSUMPTION	ABOUT 13 KN ON ABOUT 14.25 MT IFO 380 CST		
PORT CONSUMPTION	ABOUT 3 MT MGO WHEN BOTH CRANES WORKING		
CAPACITIES	7390 CBM BALE		
HATCH	64.7 M X 13.17 M		
HOLD	64.40 M X 13.17 M X 8.50		
HATCH COVERS	HYDRAULIC FOLDING TYPE 8 SEGMENTS		
CARGO GEAR	2 CRANES PORT SIDE MOUNTED NMF HIGHSPEED AT 60 MT SWL COMBI 120 MT SWL		
GRAINFITTED	YES		
TWEENDECK	2 HEIGHTS		
	P1	P2	
			M TWD - UNDERHATCH
	3.0	5.4	M TANK TOP - TWD COVER
CONTAINER CAPACITY	20 FT	40FT	
HOLD	138		
DECK	252		
TOTAL	386		
MAXIMUM STACK LOAD - HOLD	72 MT (20')	90 MT (40')	
MAXIMUM STACK LOAD - DECK	50 MT (20')	60 MT (40')	
REEFER PLUGS	10 REEFER PLUGS ON DECK		
DECK STRENGTHS	TANK TOP	TWD	HATCH COVER
	20.0 MT/SQM	2.5 MT/SQM	2.0 MT/SQM
OTHERS	IMO FITTED, CO2 FITTED, GREAT LAKES FITTED, BOW THRUSTER		

VESSEL DRAWINGS: M/V BORKUM



Speed and consumption figures are calculated basis maximum Beaufort 2, no swell and no adverse currents. Intake is always subject to vessel's stability, trim, permissible weights and is subject to regulations of visibility. Lifting capacity of vessel's cranes is subject to vessel's stability and can depend on cargo/ballast on board. Container data as well as grain/bale capacity assumes tweendeck ashore. All details are about and believed to be correct but given without guarantee.