



ASC LINER SERVICES

Emma



General info

- Built	2009
- Port of Registry	St. Johns
- Flag	Antigua & Barbuda
- Imo no	9474371
- Class	
- Owners P+I	Standard P+I
- Disp. Owners P+I	Skuld Copenhagen

Communication

- Call Sign	
- E-Mail	
- Phone	
- Mobile	
- Fax	
- Telex	

Tonnage

- Dwt	7.700 dwt
- GT/NT	6.155 / 2.759 mt
- Panama	
- Suez	6.376 / 4.965 gt/nt

Type

Multi-Purpose Dry Cargo Ship

Dimensions

- Loa	122,45 m
- Lbp	115,15 m
- Beam	18,20 m
- Draft Summer	7,15 m ssw
- Airdraft - kiel/mast	Airdraft: m (mast over keel)

Capacity

- Bale cbm	9.850 cbm
------------	-----------

Hatch

- No. 1	12,60 x 10,20 m
- No. 2	65,10 x 13,50 m
- Type of covers	MacGregor folding type

Hold

- No. 1	12,60 x 10,20 / 5,10 m LxW
- No. 2	65,10 x 13,50 m LxW

Hold Equipment

- Imo	
- Fittings	C02 and smoke detecting systems

Permissible Loads

- Tanktop hold No. 1	10 mt pr. m2
- Tanktop hold No. 2	18 mt pr. m2
- Tweendeck	2.5 mt pr. m2
- Hatch No. 1	2.3 mt pr. m2
- Hatch No. 2	2.8 mt pr. m2

Gear

- Type of gear	2 cranes 120 mt combined upto 240 mt
- Special	Lifting beam 222 mt

Containers

- Hold	164 teus
- Hatches	318 teus
- Total	532 teus (50 on deck)

Engine

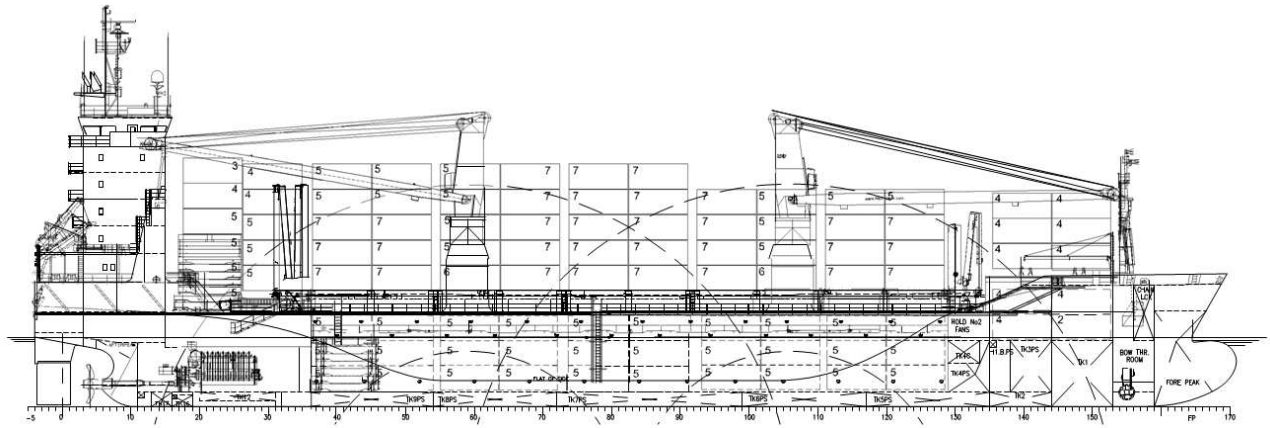
- Mainengine	MAK 9M32C – 4.320 KW at 600 RPM
- Aux. Engine	2 diesel generator 715 KW
- Shaftgenerator	
- Bowthruster	450KW

Speed / Consumption

abt 15 kn on abt 17,8 mt ifo 380 RME
consumption: idle 1,8 mt mgo
1 crane working 2,0 mgo
2 cranes working 2,9 mgo

Tank capacity

- Fuel HFO	550 cbm
- Fuel GO	60 cbm
- Freshwater	62 cbm
- Ballast	3.350 cbm



Speed and consumption figures are calculated basis maximum Beaufort 2, no swell and no adverse currents. Intake is always subject to vessel's stability, trim, permissible weights and is subject to regulations of visibility. Lifting capacity of vessel's cranes is subject to vessel's stability and can depend on cargo/ballast on board. Container data as well as grain/bale capacity assumes tweendeck ashore. All details are about and believed to be correct but given without guarantee.