



ASC LINER SERVICES

Singapore, 25th January 2011

Dear Friends and Clients,

ASC Liner Services is pleased to announce that we have chartered the MV 'Emma' for 2 year period in order to upgrade and enhance our North-West service from S.E. Asia to Western Australia.

The box-shaped 7,700 mt DWAT MPP tweendecker is a young lady, built in 2009 and is sporting 2 X 120 mt cranes combinable for up to 240 mt lifts.

We look forward to serving your needs and thank you for your continued support.

Full vessel description below.

Best Regards,

Christina Andersen-Martin
Managing Director



ASC LINER SERVICES

M/V „EMMA“

Ship's basic

Flag / Port of Registry	Antigua & Barbuda / St. Johns
Year Built	2009
Type	Multi purpose, dry cargo, strengthened for heavy cargoes, equipped for carriage of containers.

Dimensions and main data

Gross/Net tonnage	6.155 / 2.759 tons
Deadweight	7.700 dwt
Loa	122,45 meters
Breadth moulded	18,20 meters
Max draft (summer)	abt 7,15 meters
Depth to main deck	9,50 meters
Grain/Bale capacity	9.850 cbm
Container capacity	532 TEU



Holds / Hatches

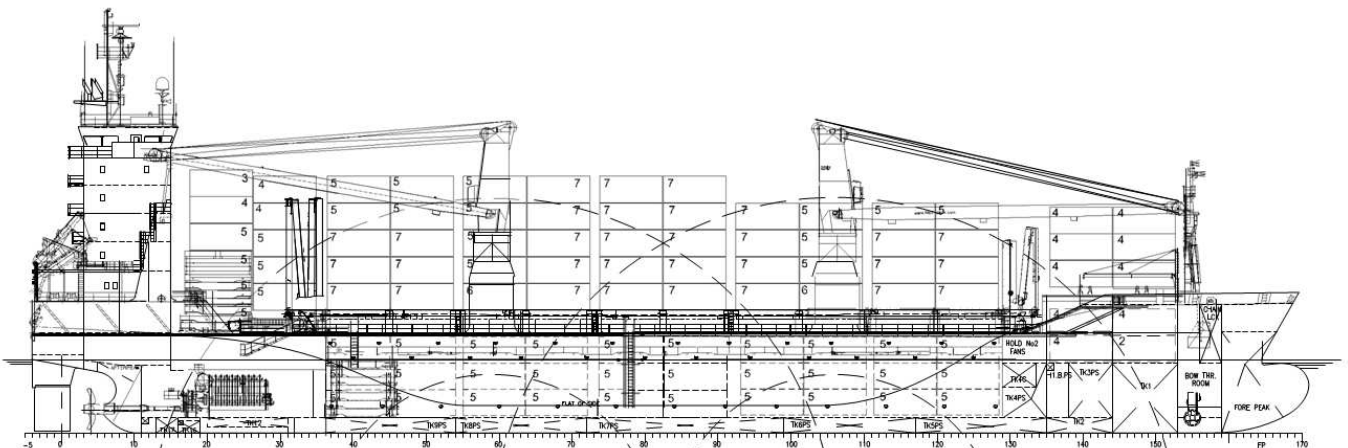
Number of holds / hatches	2 / 2
Type of hatch covers	MacGregor folding type.

Size of hatches:	No. 1:	12,60 x 10,20 meters
	No. 2:	65,10 x 13,50 meters

Size of holds:	No. 1:	12,60 x 10,20/ 5,10 meters LxW
	No. 2:	65,10 x 13,50 meters LxW

Cargo Gear

2 Units NMF-cranes of each 120 tons – located at port side
Combineable at 240 tons – excluding weight of spreader



Speed and consumption figures are calculated basis maximum Beaufort 2, no swell and no adverse currents. Intake is always subject to vessel's stability, trim, permissible weights and is subject to regulations of visibility. Lifting capacity of vessel's cranes is subject to vessel's stability and can depend on cargo/ballast on board. Container data as well as grain/bale capacity assumes tweendeck ashore. All details are about and believed to be correct but given without guarantee.